



📍 Royal Swiss Housing,  
Main Bahawalpur Road, Billi Wala, Multan

📍 **Multan Office:**  
House No. 253-D, Northern Bypass,  
Near Nigana Chowk, Multan

☎ +92-61-621 6008/9 ☎ +923-111-144-432 ☎ +923-111-144-463

📍 **Islamabad Office:**  
House # 268-A, Street # 6 Sector  
F-10/3, Islamabad  
☎ +92-51-5708908

📍 **Head Office:**  
13, Block-H, Gulberg-II, Lahore  
☎ +92-42-35711411

f Official Royal Swiss Housing @ royalswisshousing 🌐 www.royalswisshousing.com



ROYAL SWISS HOUSING  
MULTAN

*A Sustainable Living*

A PROJECT BY  
**HABIB RAFIQ (PVT.) LTD.**





# SUSTAINABLE

Multan



## ABOUT US

**Habib Rafiq Group's** rise over the past five decades has been the direct result of sheer dedication and commitment to fulfilling customer requirements both in Pakistan and abroad. **HRL** has been involved in some of the most prestigious construction & engineering projects of Pakistan and its quality management process has already earned it an ISO 9000 certification. The name **Habib Rafiq** is synonymous with quality and professionalism.

**HRL** enjoys the reputation of being a trend setter in the ever expanding arena of housing and infrastructure in the last 15 years and has earned a respect and reputation of being the most recognized name in the market. The biggest name in real estate development are proud to have **HRL** associated with them, **HRL** has added value through a useful engineering contribution towards the concept of development of housing and infrastructure vis-a-viz other disciplines. We have done many projects as Housing Scheme developer company Pakistan with complete work including construction of houses, road infrastructure construction, electrical work, mechanical work, water tanks, gas pipelines and also provided town planning services to real estate development projects in Pakistan.

**HRL** having thrown its weight abroad has been successful in maintaining the balance and secure jobs of high engineering and financial value. Today we stand tall and firm over the strong foundation of reputation and trust with a high value and numbers of human and electro mechanical resources which gives us a distinctive edge over the competitors in the market.

## AREA OF EXPERTISE:

- Power & Energy
- Chemical & Petrochemicals
- Roads, Housing & Infrastructure
- Buildings
- Water Resources Engineering
- Airports & Aviation
- Environmental
- Oil & Gas

## MAJOR INDUSTRIES:

- Government
- Power Plants
- Electricity Power Stations
- Oil Refinery
- Hospitals
- Housing Societies
- Acrylic Fiber Plant
- Urea Fertilizer Plant
- Convention Centers, Corporate Buildings, Plaza, Multi-storey Buildings
- Water Treatment Plants, Water Reservoir Dams
- Tannery Pollution Control





## VISION

To be the leading name in real estate by setting new standards in quality, sustainability, and innovation. Our vision is to build communities that inspire trust, foster harmony, and redefine luxury living while contributing to a greener and smarter future.

## MISSION

To create sustainable, modern, and luxurious living spaces that offer unparalleled comfort, convenience, and community living. We strive to blend innovation with elegance to deliver exceptional real estate projects that enrich lives and provide a secure, eco-friendly environment for future generations.





## A COMMUNITY DESIGNED FOR PERFECTION

Swiss Villas provides a luxurious lifestyle with wide roads, lush parks, and modern amenities for residents.



*A Sustainable Living*



## EMBRACE A BETTER WAY OF LIVING

Experience the charm of ultra-wide roads surrounded by lush greenery, offering a sense of openness and tranquility under the serene blue sky. At Royal Swiss Housing, we blend modern construction techniques with organic aesthetics to create a masterpiece of real estate excellence. This smartly designed project not only elevates your lifestyle but also serves as a wise investment opportunity. Secure your future today and watch your investment flourish.

PLANT THE SEED, REAP THE REWARDS!







# ROYAL SWISS HOUSING MULTAN

## RESIDENTIAL PLOTS

Discover a premium residential community designed for modern living and comfort. Royal Swiss Housing Multan offers a variety of residential plots tailored to meet your lifestyle and investment needs.

**3.5**  
MARLA

**5**  
MARLA

**7**  
MARLA

**10**  
MARLA

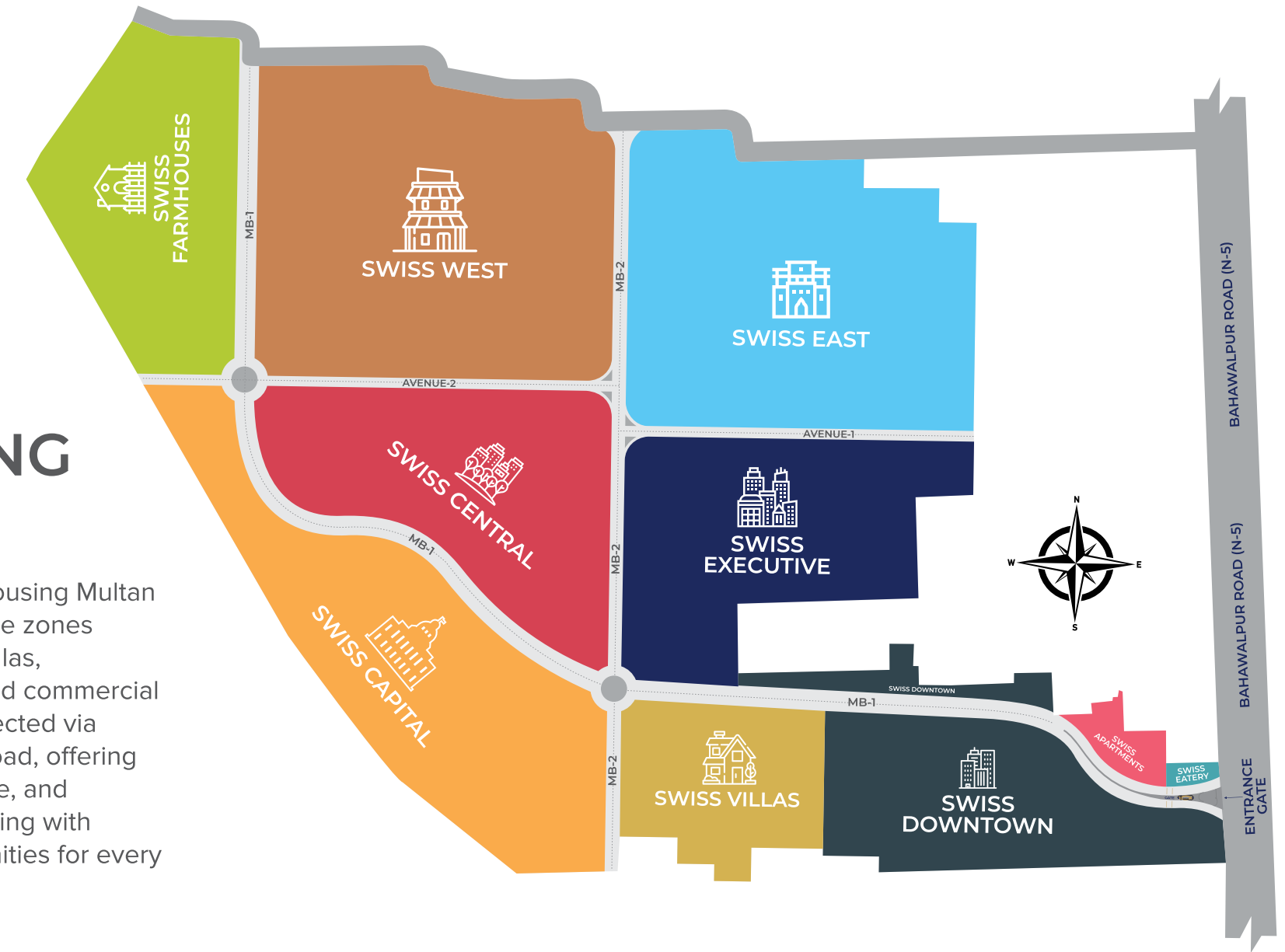
**20**  
MARLA

**40**  
MARLA

**80**  
MARLA

## ZONING PLAN

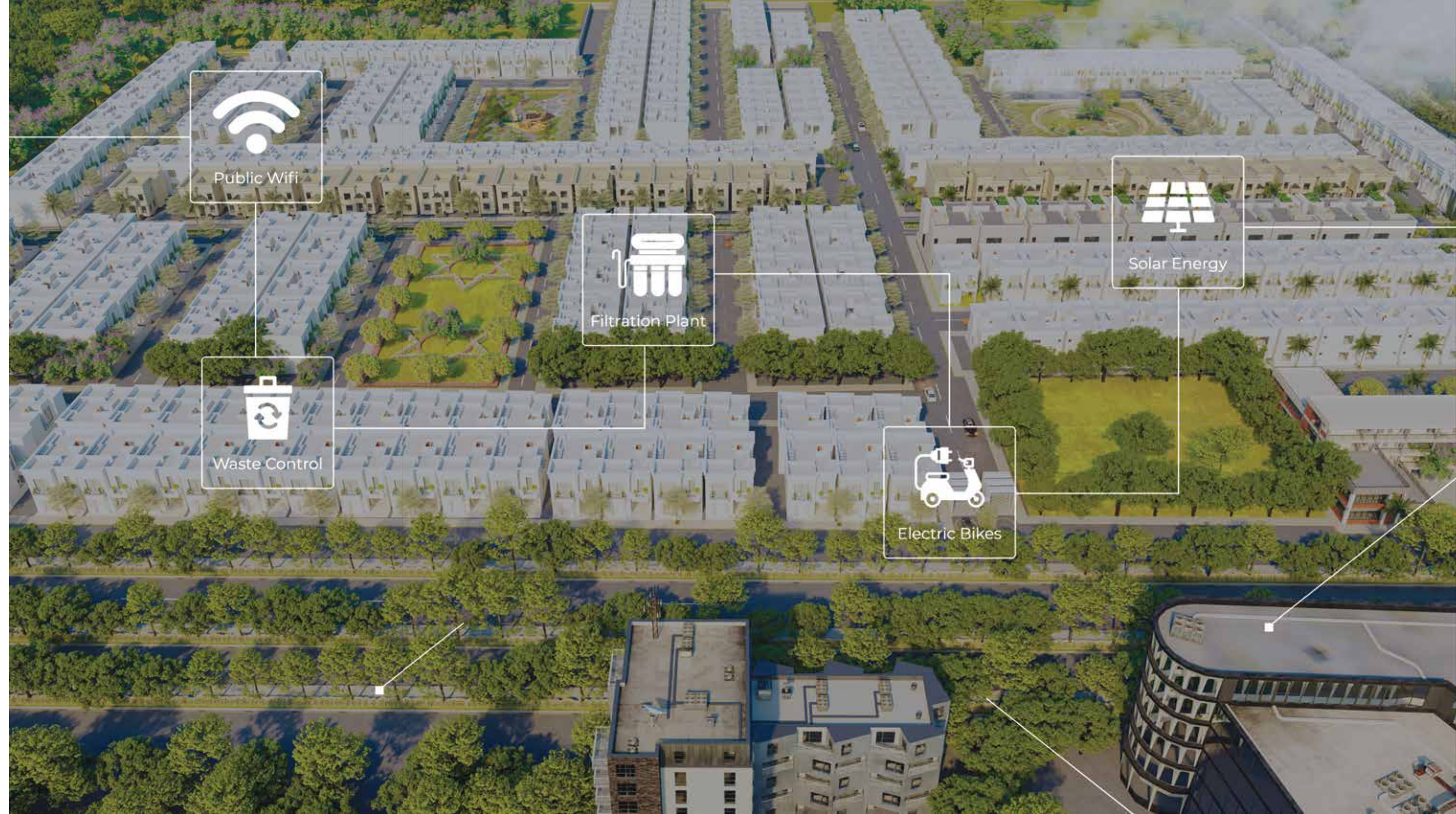
Royal Swiss Housing Multan features diverse zones farmhouses, villas, apartments, and commercial areas all connected via Bahawalpur Road, offering modern, secure, and comfortable living with premium amenities for every lifestyle.





## SWISS VILLAS REDEFINING SMART AND SUSTAINABLE LIVING

Swiss Villas is a community that redefines modern, sustainable living with state-of-the-art facilities. Enjoy uninterrupted connectivity with public WiFi, access clean and safe water through the filtration plant, and reduce your carbon footprint with solar energy-powered homes. Our efficient waste control system ensures a clean and green environment, while electric bikes promote eco-friendly transportation within the community. At Swiss Villas, every detail is thoughtfully designed to provide comfort, convenience, and sustainability for a future-ready lifestyle.





## A LIFESTYLE OF ELEGANCE AND COMFORT

Swiss Villas by Habib Rafiq (Pvt.) Ltd. at Royal Swiss Housing offers a perfect blend of luxury, comfort, and convenience. This thoughtfully designed community features park-facing villas, a beautiful Jamia Masjid, lush green parks, a modern commercial area, Kids Play Area, School, and an Open Gym, all complemented by 24/7 security for your peace of mind. With maximum villas available, Swiss Villas by Habib Rafiq (Pvt.) Ltd. ensures a premium lifestyle for families seeking elegance and tranquility. Experience the future of living at Swiss Villas—where every detail is crafted to perfection.



Park-Facing  
Villas



Jamia  
Masjid



Lush  
Parks



Kids Play  
Area



School



Open  
Gym



24/7  
Security



Commercial  
Area





# 5 MARLA

## 125 SQ. YARDS

Swiss Villas by Habib Rafiq (Pvt.) Ltd. is designed to offer a premium lifestyle with exceptional value. The fully furnished 5 Marla (125 Sq. Yard) villas are perfect for those seeking modern, comfortable, and well-equipped living spaces. Conveniently located near shopping, dining, and recreational facilities, these villas provide all the amenities you need for a luxurious and hassle-free lifestyle. With a prime location and unparalleled design, Swiss Villas are in high demand.

Step into a world of elegance and comfort—your dream home awaits at Swiss Villas!





# 7 MARLA

## 175 SQ. YARDS

Swiss Villas by Habib Rafiq (Pvt.) Ltd. offers fully furnished 7 Marla (175 Sq. Yard) villas, designed for those who seek modern, spacious, and luxurious living spaces. These villas provide the perfect combination of comfort and elegance, featuring premium finishes and contemporary designs. Located in a prime area with easy access to shopping, dining, and recreational facilities, Swiss Villas ensures convenience and luxury right at your doorstep. The 7 Marla villas are crafted to provide a sophisticated living experience, ideal for those who value both comfort and style, making them the perfect choice for a refined, high-end lifestyle.





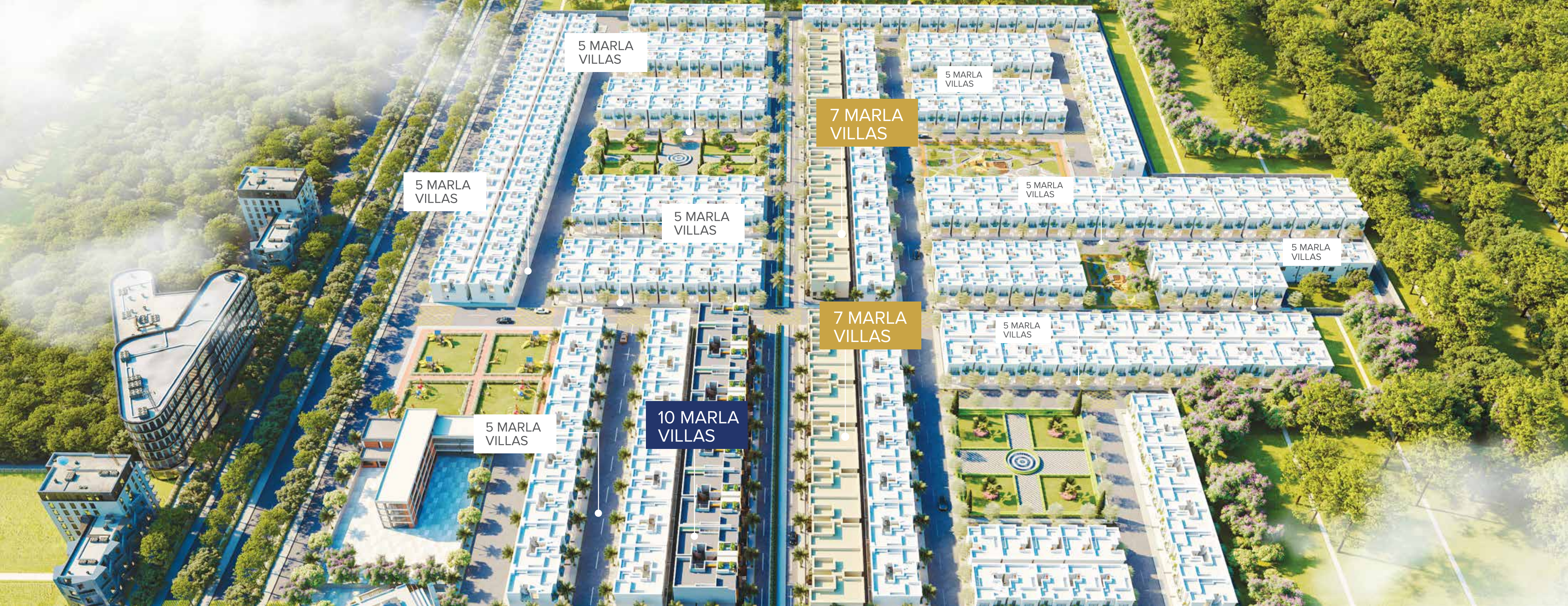
# 10 MARLA

## 250 SQ. YARDS

Swiss Villas by Habib Rafiq (Pvt.) Ltd. offers fully furnished 10 Marla (250 Sq. Yard) villas, meticulously designed for those who seek spacious, modern, and luxurious living spaces. These villas perfectly combine comfort, elegance, and functionality, providing an ideal home for those who value high-end living. Located in a prime area, Swiss Villas offers easy access to shopping, dining, and recreational facilities, ensuring convenience and luxury at your doorstep. With premium finishes, sophisticated design, and a strategic location, the 10 Marla villas at Swiss Villas provide the perfect environment for a refined and sophisticated lifestyle, making it the ultimate choice for modern living.







5 MARLA  
VILLAS

5 MARLA  
VILLAS

7 MARLA  
VILLAS

5 MARLA  
VILLAS

5 MARLA  
VILLAS

5 MARLA  
VILLAS

5 MARLA  
VILLAS

7 MARLA  
VILLAS

5 MARLA  
VILLAS

5 MARLA  
VILLAS

10 MARLA  
VILLAS





KIDS PLAY AREA

SCHOOL

MOSQUE

COMMERCIAL

ENTRANCE GATE

5 MARLA VILLAS





PARK

PARK

PARK

PARK



5 MARLA 125 SQ. YARDS



PLOT AREA 1125 SQ.FT

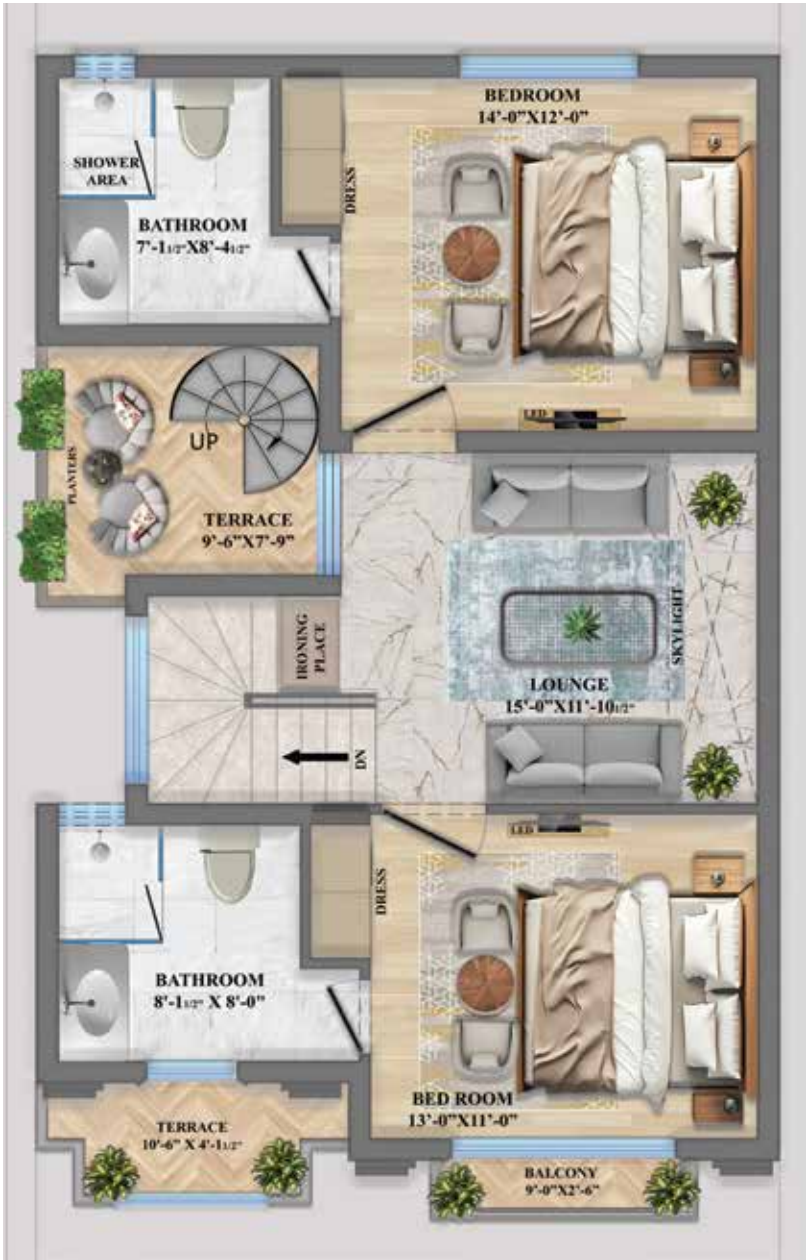
Ground Floor	953 Sq.ft
First Floor	825.5 Sq.ft
Total Covered Area	1778.5 Sq.ft

  
3 BEDROOMS

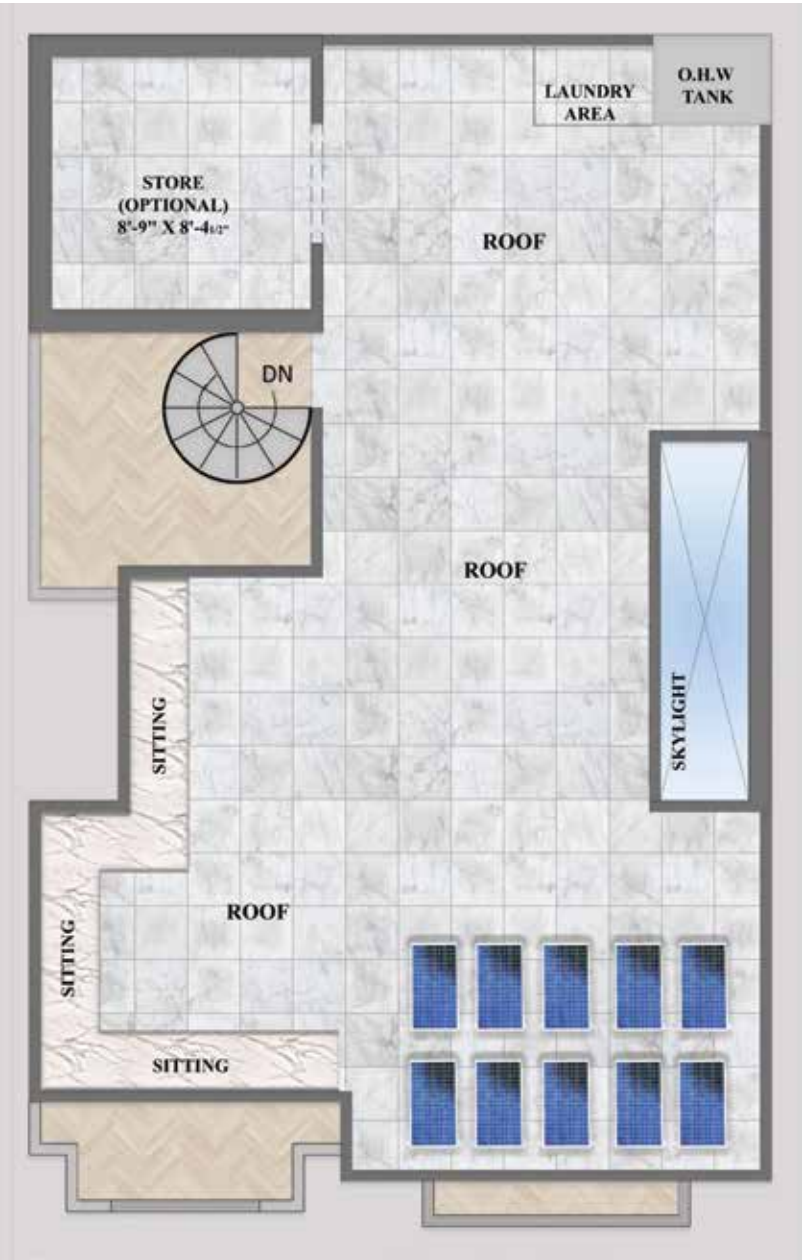
GROUND FLOOR PLAN



FIRST FLOOR PLAN



SECOND FLOOR PLAN





# 5 MARLA 125 SQ. YARDS



PLOT AREA 1125 SQ.FT

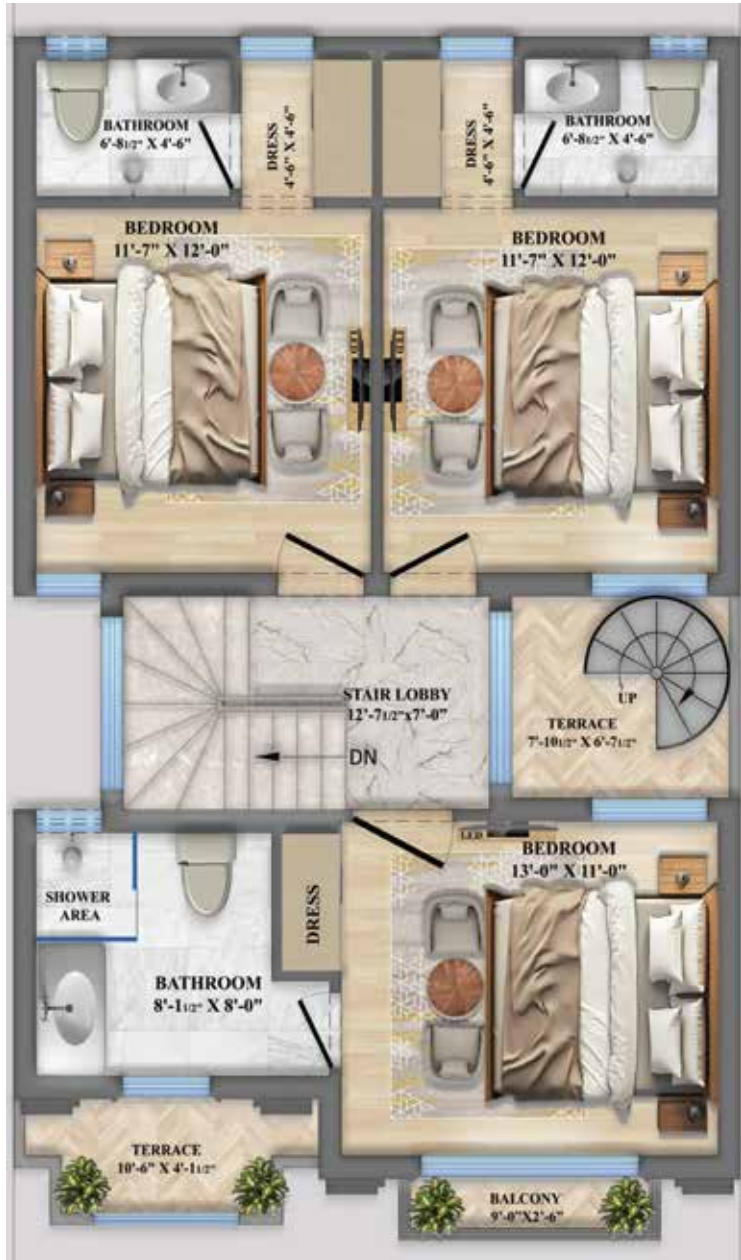
Ground Floor	953 Sq.ft
First Floor	849.5 Sq.ft
Total Covered Area	1802.5 Sq.ft

  
4 BEDROOMS

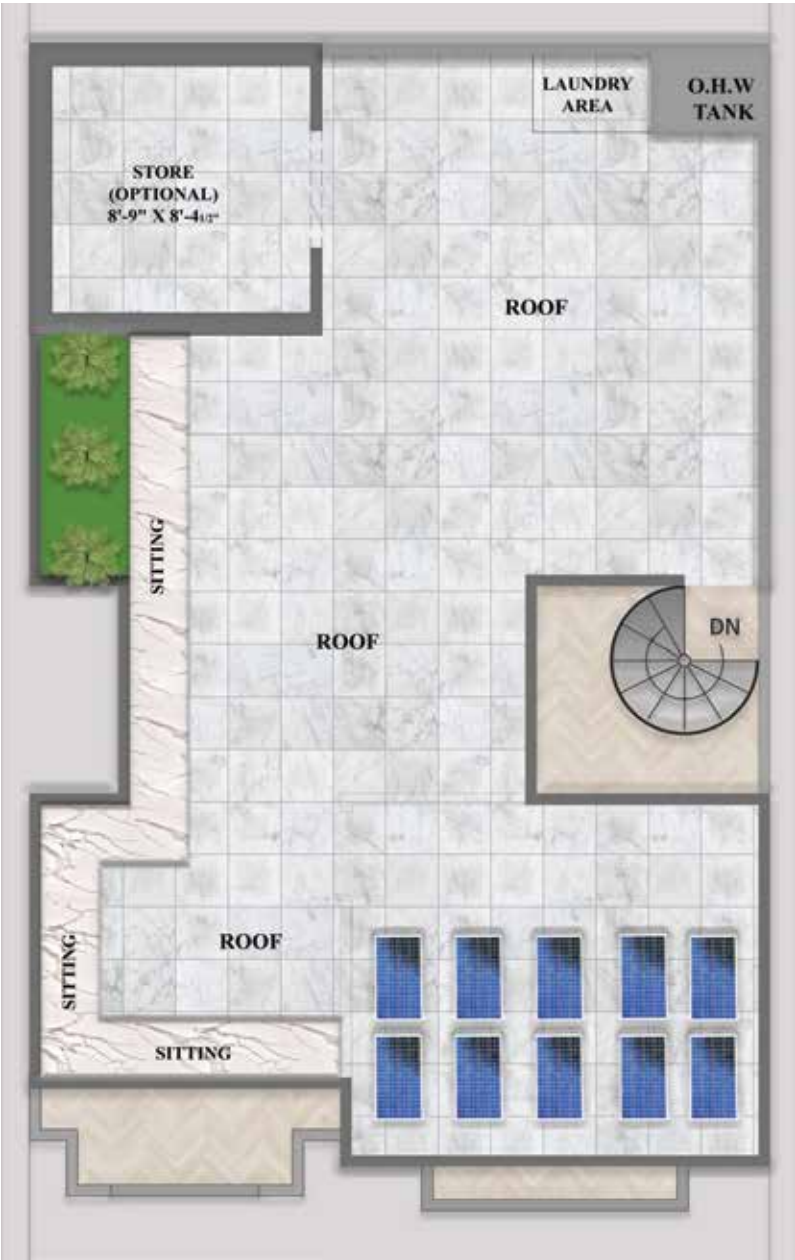
GROUND FLOOR PLAN



FIRST FLOOR PLAN



SECOND FLOOR PLAN





5 MARLA 125 SQ. YARDS



PLOT AREA 1125 SQ.FT

Ground Floor	852 Sq.ft
First Floor	825.5 Sq.ft
Total Covered Area	1677.5 Sq.ft



3 BEDROOMS

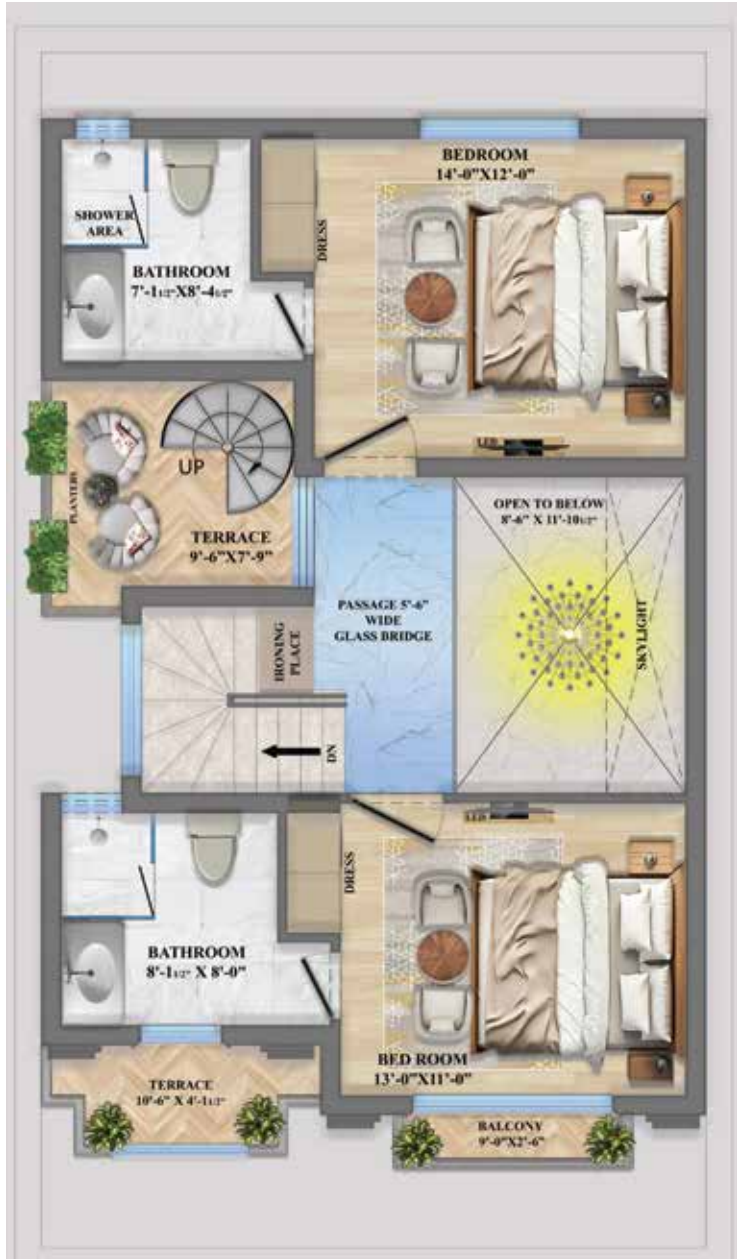


DOUBLE HEIGHT LOUNGE

GROUND FLOOR PLAN



FIRST FLOOR PLAN



SECOND FLOOR PLAN





**5 MARLA**  
125 SQ. YARDS





7 MARLA 175 SQ. YARDS



PLOT AREA 1575 SQ.FT

Ground Floor	1223.25 Sq.ft
First Floor	1140.75 Sq.ft
Second Floor	350.156 Sq.ft
Total Covered Area	2714.156 Sq.ft



3 BEDROOMS



50 FEET  
WIDE ROAD

GROUND FLOOR PLAN



FIRST FLOOR PLAN



SECOND FLOOR PLAN





# 7 MARLA

175 SQ. YARDS





# 10 MARLA 250 SQ. YARDS



PLOT AREA 2275 SQ.FT

Ground Floor	1771.25 Sq.ft
First Floor	1491.812 Sq.ft
Second Floor	281.813Sq.ft
Total Covered Area	3544.875 Sq.ft

  
4 BEDROOMS

  
DOUBLE HEIGHT  
DRAWING ROOM

  
50 FEET  
WIDE ROAD

GROUND FLOOR PLAN



FIRST FLOOR PLAN



SECOND FLOOR PLAN





# 10 MARLA 250 SQ. YARDS



PLOT AREA 2275 SQ.FT

Ground Floor	1771.25 Sq.ft
First Floor	1491.812 Sq.ft
Second Floor	281.813Sq.ft
Total Covered Area	3544.875 Sq.ft



4 BEDROOMS



50 FEET  
WIDE ROAD

GROUND FLOOR PLAN



FIRST FLOOR PLAN



SECOND FLOOR PLAN





# 10 MARLA

250 SQ. YARDS





## COMMERCIAL

Royal Swiss Housing Multan offers a premium commercial project featuring modern retail spaces, offices, and shops designed to boost business opportunities in a secure, accessible, and vibrant community environment.

2 | 4 | 8  
MARLA | MARLA | MARLA



## JAMIA MASJID

### LIGHT UP YOUR IMAN EVERY DAY

A magnificent Jamia Mosque is thoughtfully designed within the community, offering a serene and peaceful environment for worship. Equipped with modern facilities, it ensures convenience for performing religious rituals. These sacred moments nurture a deeper connection between the Creator and His creation, making every experience meaningful and fulfilling for all.





# SPORTS COMPLEX

## PREMIER FACILITIES FOR FITNESS AND RECREATION

Royal Swiss Housing Sports Complex offers a comprehensive range of sports facilities for all ages. Enjoy a professional cricket club, basketball courts, indoor badminton arenas, and a dedicated racing track for athletes. Experience elegant horse riding lessons and relax at the modern swimming pool. Designed for fitness, fun, and community, it provides a secure and vibrant environment for active lifestyles and family recreation.





# SCHOOL

## A FUTURE OF EXCELLENCE IN EDUCATION

Swiss Villas by Habib Rafiq (Pvt.) Ltd. at Royal Swiss Housing Multan offers a state-of-the-art school designed to provide quality education in a secure and modern environment. With well-equipped classrooms, innovative learning methods, and dedicated faculty, we ensure the best foundation for your child's future in a thriving, knowledge-driven community.





# LUSH PARKS

## A REFRESHING GREEN ESCAPE PARK

Swiss Villas by Habib Rafiq (Pvt.) Ltd. at Royal Swiss Housing Multan offers lush green parks designed for relaxation and recreation. Featuring beautiful landscapes, walking tracks, kids' play areas, and seating spots, our parks provide the perfect space to unwind, stay active, and enjoy nature with your loved ones. Experience a healthier and more serene lifestyle!





# ROYAL SWISS HOUSING

## LAUNCHING CEREMONY

The Royal Swiss Housing Multan Launching Ceremony was a prestigious event that introduced a unique blend of luxury, modernity, and Swiss-inspired living to the real estate market of Southern Punjab. The ceremony attracted a diverse audience including investors, real estate professionals, and esteemed guests who were eager to explore this promising new project.

During the event, a comprehensive presentation revealed the project's master plan, smart infrastructure, and future development goals. Attendees enjoyed guided walkthroughs of model units and visuals that brought the vision of Royal Swiss to life.

Live entertainment, media coverage, and interactive sessions added to the engaging atmosphere, leaving a lasting impression on all guests. The event highlighted the project's commitment to quality, innovation, and community-centric living.

This grand launch set the foundation for Royal Swiss Housing as a premium destination in Multan, reflecting a perfect harmony of European elegance and local values.





# SWISS VILLAS

## LAUNCHING EVENT

The much-anticipated launch of Swiss Villas at Royal Swiss Housing Multan was held with great enthusiasm and excitement. Prospective buyers and guests gathered to explore the luxurious villa models, showcasing modern design, spacious layouts, and premium amenities.

The event featured guided tours, detailed presentations, and exclusive launch offers. Attendees had the opportunity to interact with the development team, discuss flexible payment plans, and experience the vision behind these elegant homes.

This successful event marked a major milestone in Royal Swiss Housing's commitment to delivering luxury, comfort, and security to its residents. Swiss Villas truly represent the pinnacle of sophisticated living in Multan.







## ROYAL PEARL ENCLAVE DG KHAN

### YOUR DREAM HOME

Royal Pearl Enclave is an exclusive residential project designed to bring modern living standards to DG Khan. Strategically located with easy access to main city routes, this project offers a secure, comfortable, and vibrant community environment.

#### KEY FEATURES:

- **Residential Plots:** Available in various sizes to suit families of all needs and budgets.
- **Gated Community:** Ensuring safety and privacy with 24/7 security services.
- **Modern Infrastructure:** Wide roads, reliable utilities, and well-planned layouts.
- **Green Spaces:** Parks and recreational areas for family enjoyment and community activities.
- **Flexible Payment Plans:** Affordable and convenient options to make your dream home a reality.
- **Proximity:** Close to schools, hospitals, shopping centers, and transportation hubs.

Royal Pearl Enclave DG Khan is more than just a housing project; it's a lifestyle choice for those seeking quality, security, and growth potential in one of the city's most promising developments.

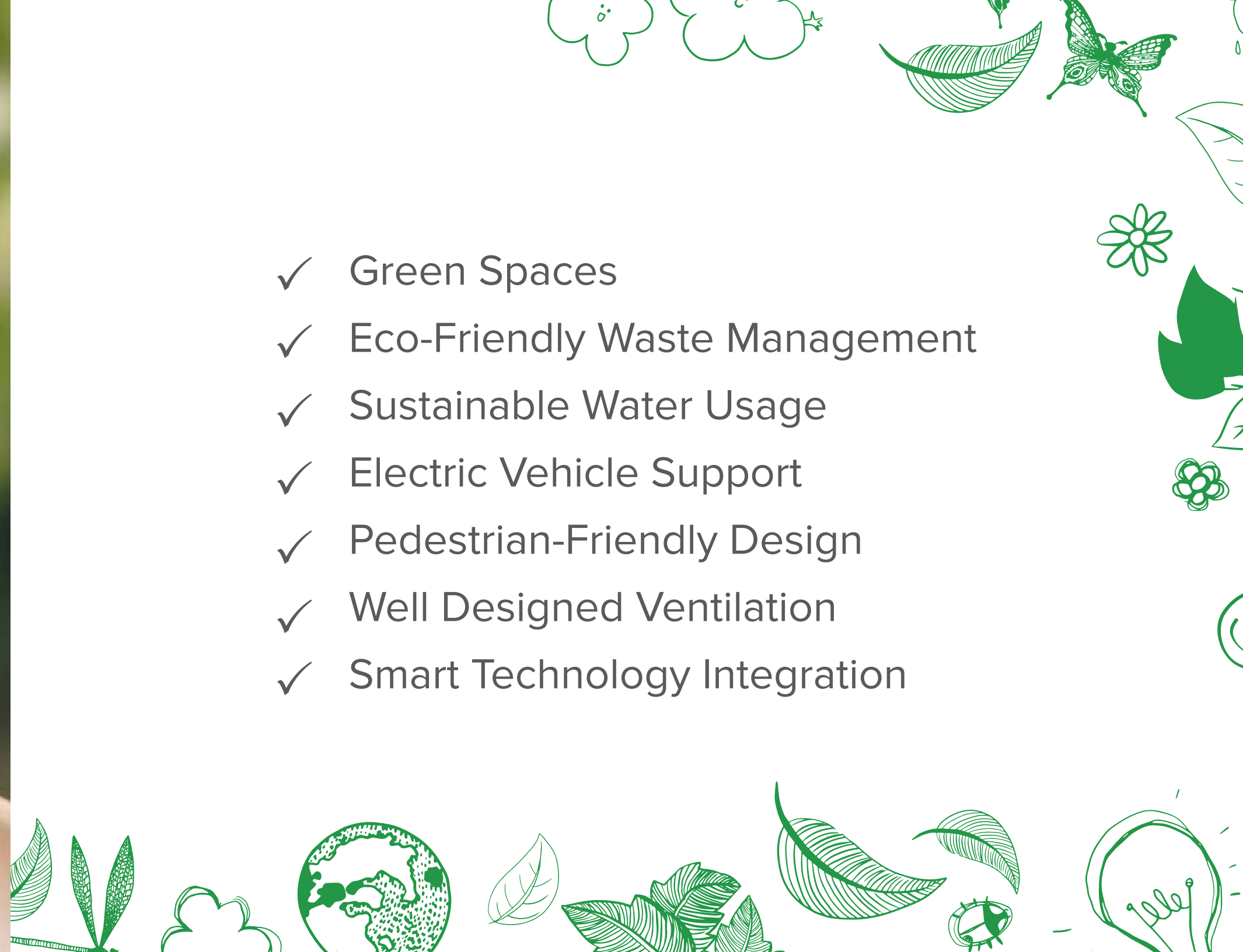
INVEST TODAY FOR A PROSPEROUS TOMORROW



# ENERGY EFFICIENT *Infrastructure*



- ✓ Green Spaces
- ✓ Eco-Friendly Waste Management
- ✓ Sustainable Water Usage
- ✓ Electric Vehicle Support
- ✓ Pedestrian-Friendly Design
- ✓ Well Designed Ventilation
- ✓ Smart Technology Integration







## ECO-FRIENDLY LIVING WITH SMART MOBILITY SOLUTIONS

Habib Rafiq (Pvt.) Ltd. is committed to a sustainable future by integrating eco-friendly solutions into everyday living. Our community promotes green transportation with electric bikes, reducing carbon emissions and fostering a cleaner environment. Designed for efficiency and convenience, these electric vehicles align with our vision of a smart, sustainable lifestyle, ensuring a greener tomorrow for all residents.

